



Handwriting

NSW Foundation Style

5

SAMPLE

Deborah
Davis &
Susan
Taylor



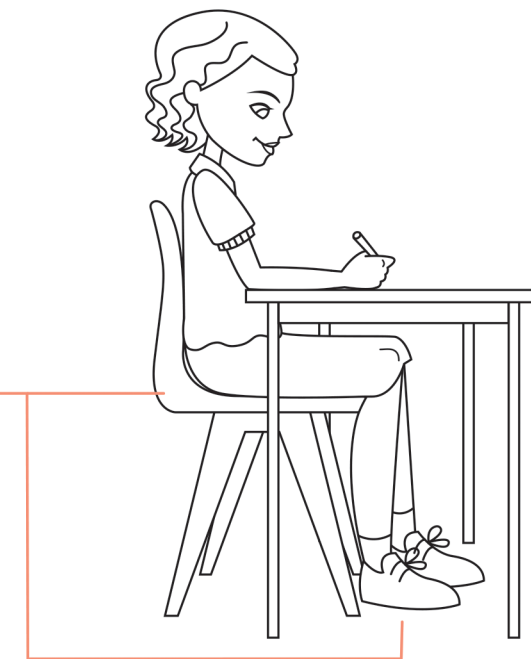
Contents

Are you ready to write?	2	Building fluency	Converting between scripts	39
Revision		Diagonal joins to ascenders	Labelling timelines	40
Foundation printing	3	Diagonal joins from 'q'	Labelling diagrams	41
Capital letters	4	Diagonal joins from 'z'	Legibility: Slope, spacing and size	42
Numerals	5	Diagonal joins review	Self-assessment: Legibility	45
Revising tricky joins		Drop-in joins	Introducing speed loops	
Horizontal joins to 'e'	6	Horizontal joins to anti-clockwise letters	Speed loops from descenders	46
Joining 'ft'	7	Horizontal joins to ascenders	Speed loops to ascenders 'b', 'h', 'k' and 'l'	47
Joining to 's'	8	Horizontal joins from 'f'	Speed loops to and from 'f'	49
Self-assessment: Tricky joins	9	Horizontal joins review	Speed loops from 'z'	50
Introducing fluency joins		Self-assessment: Building fluency	Practising speed loops	51
Fluency joins from 'b', 'p' and 's'	10	Consolidation	Speed and legibility	52
Fluency joins to ascenders	12	Foundation printing	Handwriting in context	54
Practising fluency joins	14	Capital letters	Independent writing activity	55
Legibility		Numerals	Teacher observation guide ..	56
Slope	17	Punctuation		
Spacing	18	Double letter combinations		
Size	19	Classifying joins		

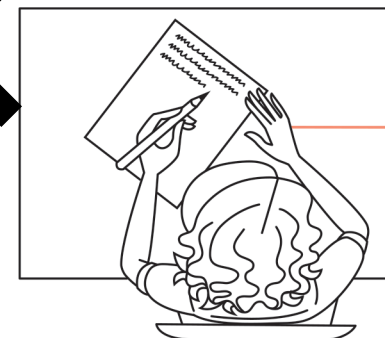
Are you ready to write?

Posture

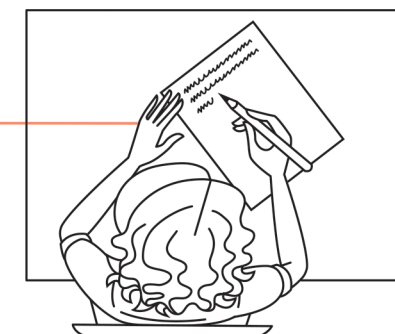
Ensure your feet are flat on the floor and you are sitting well back in the chair.



Paper position



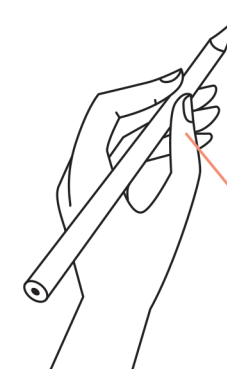
left-handed



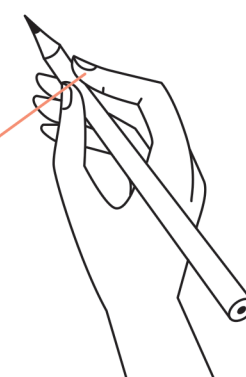
right-handed

Hold the paper with your non-writing hand.

Pencil grip



left-handed



right-handed

Hold your pencil with one finger on top of the barrel.

Support the barrel with your thumb.

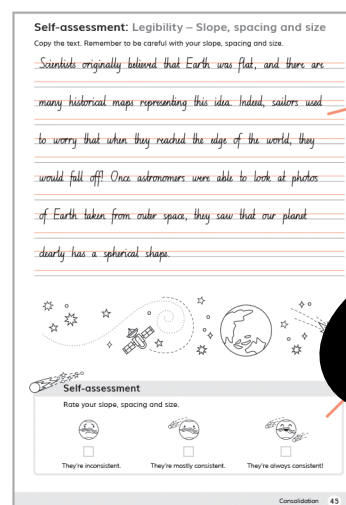
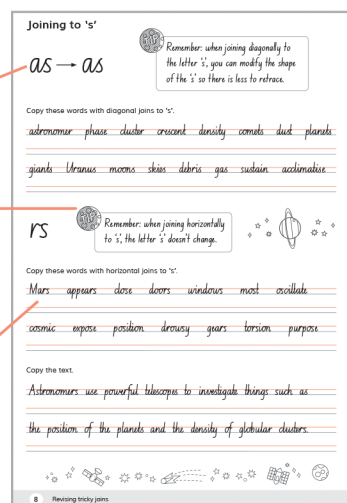
PM Handwriting 5 learning features

Large letter models to reinforce the skill or join

Student tips

Revision and practice of joins

Introduction to fluency joins and speed loops

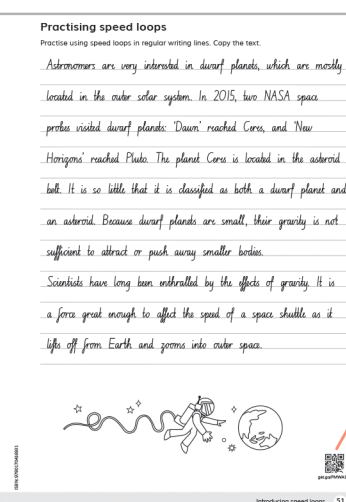
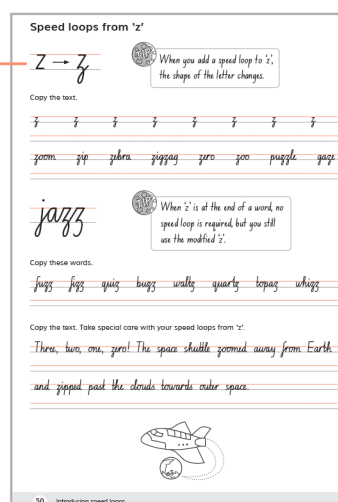


Activities focusing on legibility: slope, spacing and size

Self-assessments and Peer reviews

Introduction to 9mm regular writing lines

QR codes on selected pages link to online extension activities



Practise maintaining a consistent slope. Copy each word in the slope grid.

exoplanet

universe

terrestrial

atmosphere

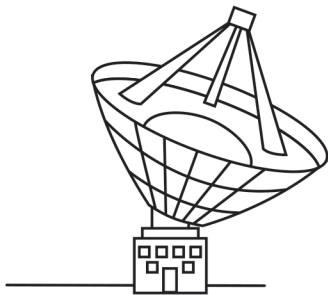
habitable

telescope

galaxy

Circle the statement or statements that apply to you.

- These slope grids were easy to use.
- These slope grids were hard to use.
- These slope grids helped me keep a consistent slope.



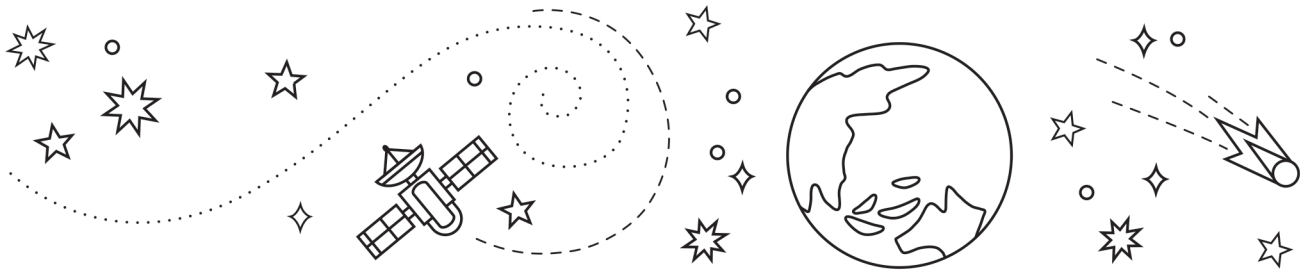
ISBN: 9780170416931

ISBN: 9780170416931

Self-assessment: Legibility – Slope, spacing and size

Copy the text. Remember to be careful with your slope, spacing and size.

Scientists originally believed that Earth was flat, and there are many historical maps representing this idea. Indeed, sailors used to worry that when they reached the edge of the world, they would fall off! Once astronomers were able to look at photos of Earth taken from outer space, they saw that our planet clearly has a spherical shape.



Self-assessment

Rate your slope, spacing and size.

☐

They're inconsistent.

☐

They're mostly consistent.

☐

They're always consistent!

Speed loops from descenders



Adding a speed loop to the tail, or descender, of a letter can help you to write faster and with fluency. Make a loop and trail your pen or pencil up from the descender, crossing at the baseline.

galactic jump yonder

loop crosses at the baseline



A speed loop is not needed if 'g', 'j' or 'y' is at the end of a word.

Copy these letter pairs and words with speed loops from 'g'.

gl ga gu gr gh ge gl ga gu gr

gravity age large guru green great grip

Copy these letter pairs and words with speed loops from 'j'.

ja ju jo ju je ji ja ju jo ju je ji

jaguar jumped join object adjust joy jest

Copy these letter pairs and words with speed loops from 'y'.

yr yo yu ye yi ya yr yo jo

year young yes lying myriad yapping yesterday

Speed loops to ascenders 'b', 'h', 'k' and 'l'

loops cross at the body line

ph ck



Using speed loops when joining to 'b', 'h', 'k' and 'l' makes joining letters faster because there is less to retrace. These speed loops cross at the body line.

Copy these letter pairs and words with speed loops to 'b'.

rb ib mb ob ub bb lb ab rb ib

suburb bib comb lobby tub bulb bubble

Copy these letter pairs and words with speed loops to 'h'.

ch ph gh sh th oh ch ph gh sh

children graph shout thistle tough touch wish

Copy these letter pairs and words with speed loops to 'k'.

ek ok ck nk rk sk ak ek

speak plank knock ask quack deck shark walk

Copy these letter pairs and words with speed loops to 'l'.

al ol ul il rl tl sl pl ul gl

girl holly subtle pill enthrall howl slender plate

PM *Handwriting* is a carefully sequenced program of handwriting instruction for Kindergarten to Year 6. It is designed to support students in developing a fluent, legible and automatic handwriting style.



A comprehensive handwriting program for New South Wales:

K	1	2	3	4	5	6
PM Handwriting NSW Foundation Style Kindergarten	PM Handwriting NSW Foundation Style Year 1	PM Handwriting NSW Foundation Style Year 2	PM Handwriting NSW Foundation Style Year 3	PM Handwriting NSW Foundation Style Year 4	PM Handwriting NSW Foundation Style Year 5	PM Handwriting NSW Foundation Style Year 6
9780170416887	9780170416894	9780170416900	9780170416917	9780170416924	9780170416931	9780170416948